

METRIC
 DISTANCES AND COORDINATES SHOWN ON THIS PLAN ARE IN METRES
 AND CAN BE CONVERTED TO FEET BY DIVIDING BY 0.3048

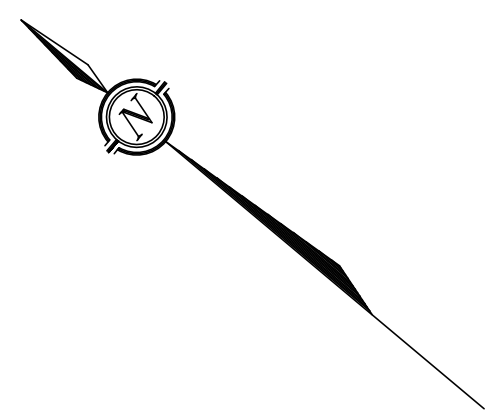
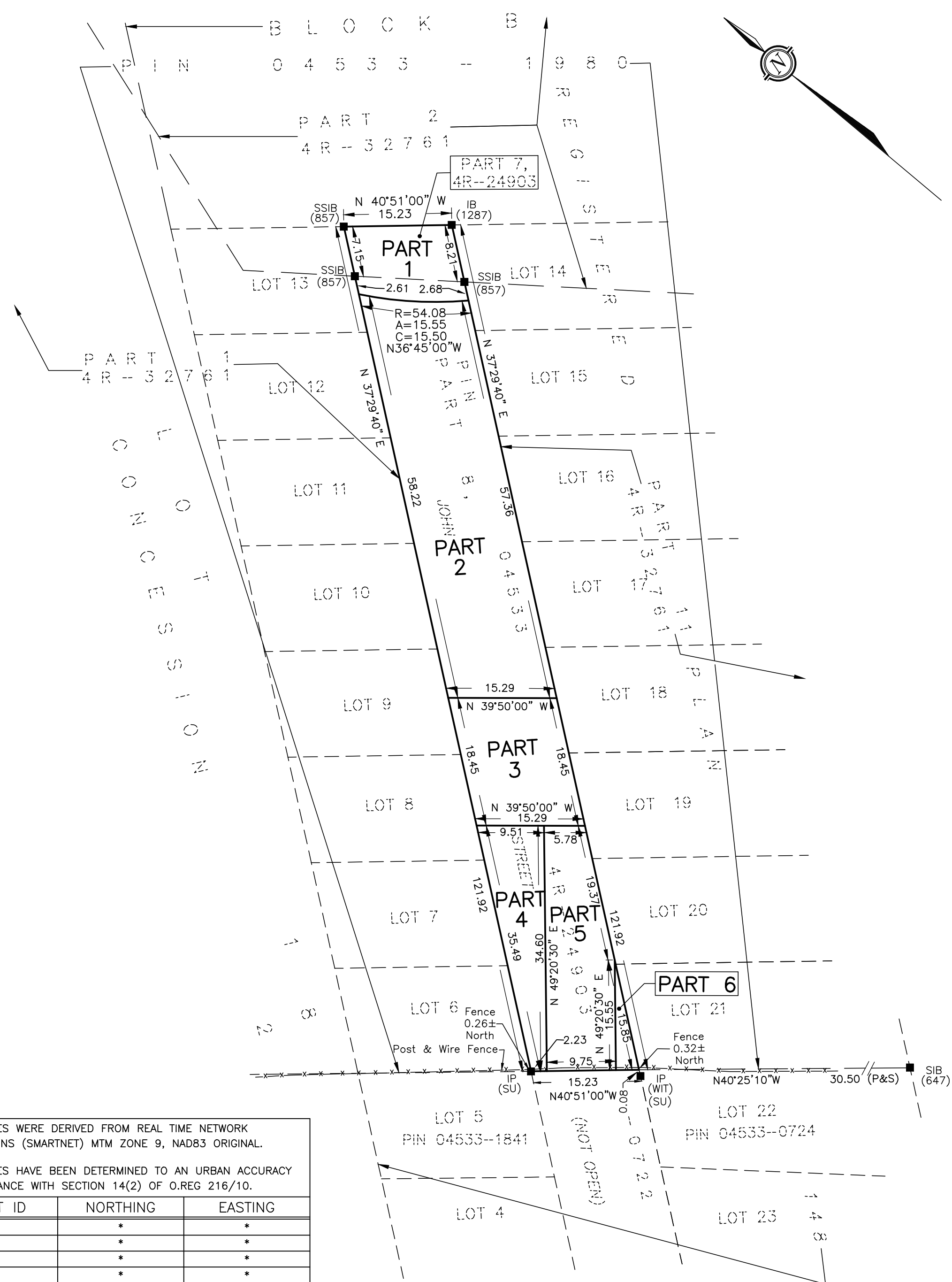
SCHEDULE			
PART	LOT	REG'D PLAN	PIN
1 TO 6 (INCLUSIVE)	PART OF JOHN STREET	148	PART OF 04533-0724

I REQUIRE THIS PLAN TO BE DEPOSITED UNDER THE LAND TITLES ACT.
 DATE _____

 JOHN H. GUTRI, O.L.S.

PLAN 4R-
 RECEIVED AND DEPOSITED
 DATE _____

 REPRESENTATIVE FOR
 LAND REGISTRAR FOR THE
 LAND TITLES DIVISION OF
 OTTAWA - CARLETON (N° 4)



**PLAN OF SURVEY OF
 PART OF JOHN STREET IN FRONT OF
 LOTS 6 TO 21 (BOTH INCLUSIVE)
 REGISTERED PLAN 148
 CITY OF OTTAWA**

SCALE 1 : 500
 0 10 20 50 metres
FAIRHALL, MOFFATT & WOODLAND LIMITED
 ONTARIO LAND SURVEYORS

- NOTES**
- BEARINGS ARE GRID AND ARE REFERRED TO THE SOUTHEASTERLY LIMIT OF LOTS 6 TO 13 (INCLUSIVE) SHOWN ON PLAN 4R-32761 AS HAVING A BEARING OF N 37°29'40" E AND ARE REFERRED TO THE CENTRAL MERIDIAN, 76°30' W LONGITUDE MTM ZONE 9, NAD83 ORIGINAL.
 - DISTANCES ARE GROUND AND CAN BE CONVERTED TO GRID BY MULTIPLYING BY THE COMBINED SCALE FACTOR 0.999905.

- LEGEND**
- - SURVEY MONUMENT SET
 - - SURVEY MONUMENT FOUND
 - SIB - STANDARD IRON BAR
 - SSIB - SHORT STANDARD IRON BAR
 - (P) - REGISTERED PLAN
 - (S) - SET
 - (M) - MEASURED
 - (857) - FAIRHALL, MOFFATT & WOODLAND LIMITED, O.L.S.
 - (1287) - FARLEY, SMITH & DENIS SURVEYING LTD.
 - (647) - FARLEY, SMITH & DENIS SURVEYING LTD.
 - PIN - PROPERTY IDENTIFIER NUMBER
 - IP - IRON PIPE
 - (WIT) - WITNESS
 - (SU) - SOURCE UNKNOWN
 - IB - IRON BAR

SURVEYOR'S CERTIFICATE

I CERTIFY THAT:

- THIS SURVEY AND PLAN ARE CORRECT AND IN ACCORDANCE WITH THE SURVEYS ACT, THE SURVEYORS ACT, THE LAND TITLES ACT AND THE REGULATIONS MADE UNDER THEM.
- THE SURVEY WAS COMPLETED ON

DATE _____ JOHN H. GUTRI
 ONTARIO LAND SURVEYOR

COORDINATES WERE DERIVED FROM REAL TIME NETWORK OBSERVATIONS (SMARTNET) MTM ZONE 9, NAD83 ORIGINAL.

COORDINATES HAVE BEEN DETERMINED TO AN URBAN ACCURACY IN ACCORDANCE WITH SECTION 14(2) OF O.REG 216/10.

POINT ID	NORTHING	EASTING
*	*	*
*	*	*
*	*	*
*	*	*

COORDINATES CANNOT IN THEMSELVES BE USED TO RE-ESTABLISH CORNERS OR BOUNDARIES SHOWN ON THIS PLAN.

Fairhall Moffatt & Woodland LIMITED ONTARIO LAND SURVEYORS <i>Surveying and Land Information Services</i> 100-600 TERRY FOX DRIVE, KANATA, ONTARIO K2L 4B6 TEL: (613) 591-2580 FAX: (613) 591-1495 www.fmw.on.ca		JOB No. Z 2 2 0 0 0
		E 341276, N 5023039
		REFERENCE No. 26 - 148 HUNTLEY
		S:\JOBS\222000\DWGS rp-2220-john-st.dwg (lg)